

Part Number Code of Pressure Gauge



Basic Instrument Type

- 0=Special
- 1=Bourdon Tube/Standard
- 2=Bourdon Tube/Industry
- 3=Bourdon Tube/Test
- 4=Diaphragm
- 5=Alarm Contacts
- 9=Mechanical Accessories

Wetted parts

- 0=Special Material
- 1=Cu-alloy
- 2=Copper
- 3=Stainless Stell
- 4=Nickel-iron Alloy
- 5=Plastic

Model

- 0=Special
- 1=Standard
- 2=Waterproof
- 3=Liquid filled

Design code

- 0=Standard (plastic case)
- 1=Reinforced (steel case)
- 2=Safety pattern
- 3=Process Industry (all stainless steel)
- 4=Process Industry (high overpressure safety pattern)
- 5=Welding
- 6=Sprinkler
- 7=Multi-Display
- 8=Tire pressure Engine Oil Pressure
- 9=Refrigeration

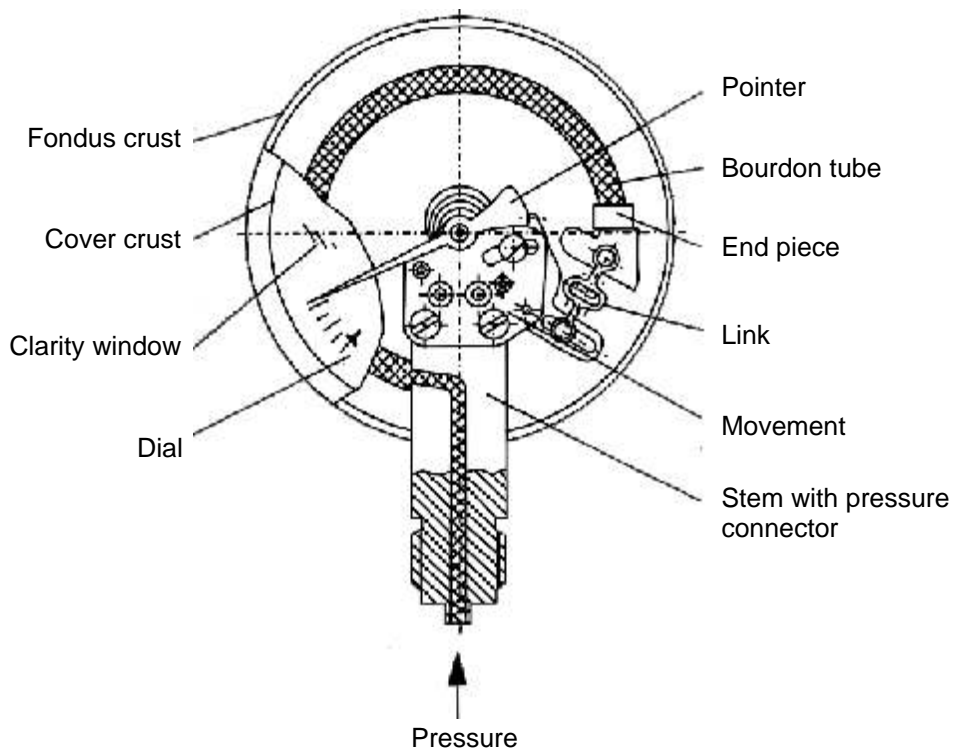
Mounting method

- 1=LM (Lower Mount)
- 2=CBM (Center Back Mount)
- 3=LSM (Lower Surface Mount)
- 4=BPM (Back Panel Mount)
- 5=CBM/UC (Center Back U-Clamp Panel Mount)
- 6=LPM (Lower Panel Mount)
- 7=Accessory

Nominal size

- 0=Accessory
- 1=25MM
- 2=40MM(1.5")
- 3=50MM(2")
- 4=63MM(2.5")
- 5=70MM
- 6=80MM(3")
- 7=100MM(4")
- 8=125MM(5")
- 9=150MM(6")

Main Parts of Pressure Gauge



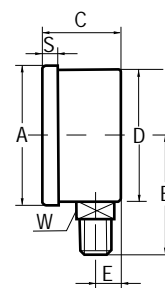
LM (Lower Mount)

Model:	111.01 black plastic case 111.11 black finish steel case
Service intended:	Suitable for gaseous and liquid media that will not be corrosive for the Cu-alloy
Scale ranges:	-1 kg/ cm ² ~ 0~ 20kg/ cm ² 0 ~ 600 kg/cm ²
Scale unit:	Mpa, kg/cm ² , bar, psi
Accuracy class:	1.6/2.5
Connection:	25(1"), 40(1.5"), 50(2"), 63(2.5") NPT, PT, BSP(1/8,1/4"), M10x1, M14x1.5, 80(3"), 100(4") NPT, PT, BSP (3/8", 1/2"), M20x1.5



Nominal size

PART No.	A	B	C	D	E	S	W
111,011	26	25	25	26	5	/	11
111,012	41	36	23	41	7,5	2,5	11
111,013	50	46	28	50	10	3,5	14
111,014	63	54	28	63	10	3	14
111,017	105	78	36	99	15,5	11	17/22
111,111	28	26	25	28	5	2	11
111,112	42	36	23	41	8,5	9	11
111,113	52	48	29	51	10	10	14
111,114	63	54	29	62	10	17/11	14
111,116	81	64	29	80	11	11	14/17
111,117	100	85	36	98	13,5	18	17/22
111,119	151	110	46	150	15	18	22



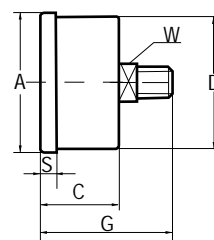
CBM (Center Back Mount)

Model:	111.02 black plastic 111.12 black finish steel case
Service intended:	Suitable for gaseous and liquid media that will not be corrosive for the Cu-alloy
Scale ranges:	-1 kg/ cm ² ~ 0 ~ 20kg/ cm ² 0 ~ 600 kg/cm ²
Scale unit:	Mpa kg/cm ² bar psi
Accuracy class:	1.6/2.5
Connection:	25(1"), 40(1.5"), 50(2"), 63(2.5") NPT, PT, BSP(1/8", 1/4"), M10x1, M14x1.5, 80(3"), 100(4") NPT, PT, BSP (3/8", 1/2"), M20x1.5



Nominal size

PART NO.	A	C	D	G	S	W
111,021	26	17	26	31	/	11
111,022	41	25	41	41	2,5	11
111,023	51	27	51	51	3,5	14
111,024	63	28	63	53	3	14
111,027	100	36	99	66	11	17
111,121	28	17,5	28	32,5	2	11
111,122	42	25	41	41	9	11
111,123	52	29	51	46	10	14
111,124	63	29	62	53	17/11	14
111,126	81	29	80	55	11	14
111,127	100	36	98	66	18	17/22

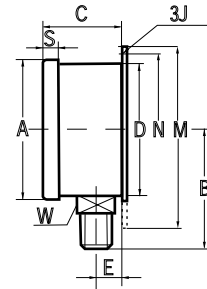


LSM (Lower Surface Mount)

Model:	111.13
Service intended:	Suitable for gaseous and liquid media that will not be corrosive for the Cu-alloy Qualified particular for 3-hole surface mounting flange
Scale range:	-1kg/cm ² ~0~20kg/cm ² 0 ~ 600 kg/cm ²
Scale unit:	Mpa kg/cm ² bar psi
Accuracy class:	1.6/2.5
Connection:	63(2.5") NPT, PT, BSP(1/8, 1/4"), M10x1, M14x1.5, 80(3") 100(4"), 150(6") NPTS, PT, BSP (3/8", 1/2"), M20 x 1.5

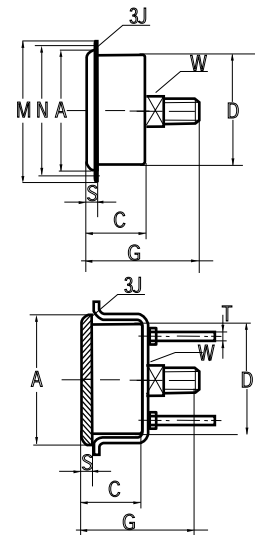
Nominal size

PART NO.	A	B	C	D	E	M	N	S	W
111.134	63	54	28	62	10	80	71.5	4	14
111.136	81	64	36	80	16	110	95	11	14/17
111.137	100	85	37	98	13.5	128	116	18	22
111.139	151	110	49	150	18	179	164	18	22



Models:	
Service intended:	Suitable for gaseous and liquid media that will not be corrosive for the Cu-alloy Alternative U-form clamp or 3-hole panel mounting flange
Scale ranges:	
Scale unit:	Mpa kg/cm ² bar psi
Accuracy class:	
Connection:	40(1.5"), 50(2"), 63(2.5") NPT, PT, BSP (1/8, 1/4"), M10x1, M14x1.5, 100(4") NPT, PT, BSP (3/8", 1/2"), M20x1.5

PART NO.	A	C	D	G	M	N	S	T	W
111.042		25		41		50		/	
111.142		26.5		45		52.5		/	
111.143		28		48		55		/	
111.144		30		53		73.5		/	
111.147		35		66		117		/	
111.152		27		42		/		M5	
111.153		30		48		/		M5	
111.154		30		50		/		M5	

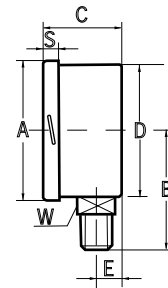


LM (Lower Mount)

Model:	211.11
Service intended:	Suitable for gaseous and liquid media that will not be corrosive for the Cu-alloy Higher accuracy class With pressure releasing hole, higher safety.
Scale ranges:	-1kg/cm ² ~0~20kg/cm ² 0~600 kg/cm ²
Scale unit:	Mpa kg/cm ² bar psi
Accuracy class:	1.6/2.5
Connection:	100(4"), 150(6") NPT, PT, BSP (3/8, 1/2"), M20x1.5

Nominal size

PART NO.	A	B	C	D	E	S	W
211.117	102	85	48	99	15	18	22
211.119	151	110	49	150	15	18	22

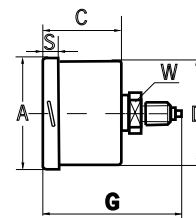


CBM (Center Back Mount)

Models:	211.12
Service intended:	Suitable for gaseous and liquid media that will not be corrosive for the Cu-alloy. Higher accuracy class With pressure releasing hole, higher safety.
Scale ranges:	-1kg/cm ² ~0~20kg/cm ² 0 ~ 600 kg/cm ²
Scale unit:	Mpa kg/cm ² bar psi
Accuracy class:	1
Connection:	100(4") NPT, PT, BSP (3/8, 1/2"), M20x1.5

Nominal size

PART NO.	A	C	D	G	W
211.127		48		78	22



LMF (Lower Mount Flange)

Model: 211.13 Lower surface mounting flange
211.16 Lower panel mounting flange

Service intended: Suitable for gaseous and liquid media that will not be corrosive for the Cu-alloy
Higher accuracy class
With pressure releasing hole, higher safety.
Alternative 3-hole panel or surface mounting flange.

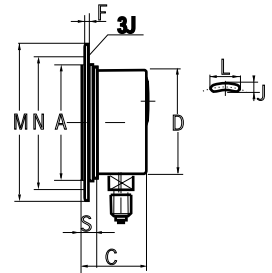
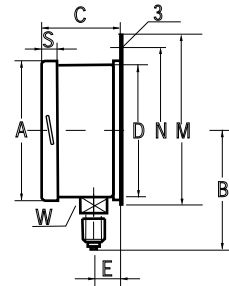
Scale ranges: -1kg/cm² ~ 0 ~ 20kg/cm²
0 ~ 600 kg/cm²

Scale unit: Mpa kg/cm² bar psi

Accuracy class: 1

Connection: 100(4"), 150(6") NPT, PT, BSP (3/8, 1/2"), M20x1.5

PART NO.	A	B	C	D	E	M	N	S	W
211.137	102	85	54	99	17	128	116	18	22
211.139	151	110	49	150	18	179	164	18	22
211.167	102	85	48	99	15	135	116	18	22



BPM (Back Panel Mount)

Models: 211.14

Service intended: Suitable for gaseous and liquid media that will not be corrosive for the Cu-alloy.
Higher accuracy class
With pressure releasing hole, higher safety.
3-hole panel mounting flange.

Scale ranges: -1kg/cm² ~ 0 ~ 20kg/cm²
0 ~ 600 kg/cm²

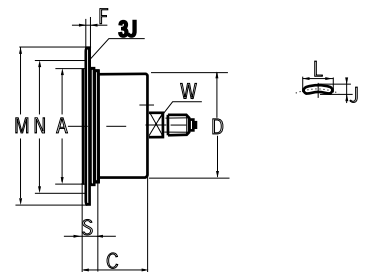
Scale unit: Mpa kg/cm² bar psi

Accuracy class: 1

Connection: 100(4") NPT, PT, BSP (3/8, 1"), M20x1.5

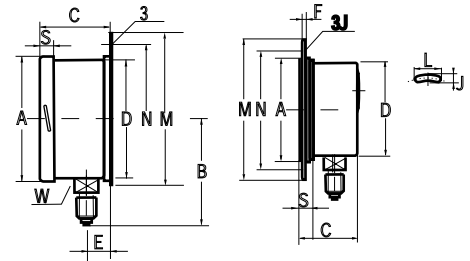
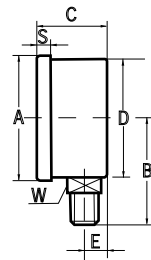
Nominal size

PART NO.	A	C	D	G	M	N	S	W
211.147		48		78		116		22



Industrial

Model:	112.21, 212.21	Lower mount
	112.23, 212.23	Lower surface mounting flange
	212.26	Lower panel mounting flange
Service intended:	Suitable for gaseous and liquid media that will not be corrosive for the Cu-alloy	
	Waterproof	
	Stainless steel case	
	3-hole panel mounting flange, for assembling on the spot.	
	Special versions alarm contacts	
Scale ranges:	-1kg/cm ² ~ 0 ~ 20kg/cm ²	
	0 ~ 600 kg/cm ²	
Scale unit:	Mpa kg/cm ² bar psi	
Accuracy class:	1.0/1.6	
Connection:	63(2.5") NPT, PTS, BSP(1/8", 1/4"), M10x1, M14x1.5 100(4"), 150(6") NPT, PT, BSP(3/8", 1/2"), M20x1.5	

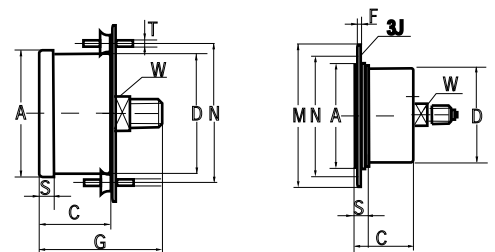
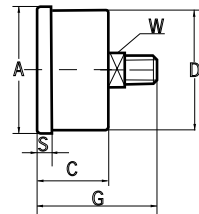


Nominal size

PART NO.	A	B	C	D	E	M	N	S	W
112.214	68	55	28	62	8,5	/	/	6	14
112.217	108	85	36	98	12	/	/	7	22
212.217	101	90	48	99	18	/	/	18	22
212.219	158	110	48	149	20	/	/	13	22
112.234	68	55	28	62	8,5	85	78	6	14
112.237	108	85	43	98	15	128	116	7	22
212.237	101	90	54	99	22	128	116	18	22
212.239	158	110	50	149	20	179	164	14	22
212.267	101	90	48	99	18	135	116	18	22

Industrial

Models:	112.22, 212.22	Center back mount
	112.24, 212.24, 112.25	Back panel
Service intended:	Suitable for gaseous and liquid media that will not be corrosive for the Cu-alloy	
	Waterproof	
	Stainless steel case	
	3-hole panel mounting flange, for assembling on the spot.	
Scale ranges:	-1kg/cm ² ~ 0 ~ 20kg/cm ²	
	0 ~ 600 kg/cm ²	
Scale unit:	Mpa kg/cm ² bar psi	
Accuracy class:	1.0/1.6	
Connection:	63(2.5"), NPT, PTS, BSP(1/8", 1/4"), M10x1, M14x1.5 100(4"), 150(6") NPT, PT, BSP(3/8", 1/2"), M20x1.5	

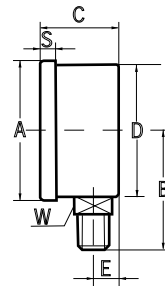


Nominal size

PART NO.	A	C	D	G	M	N	S	W
112.224		28		56		/		14
112.227		36		72		/		22
212.227		48		84		/		22
112.244		28		56		78		14
112.247		36		72		116		22
212.247		48		84		116		22
112.254		28		56		72		14

LM (Lower Mount)

Model: 113.21, 213.21
 Service intended: Suitable for gaseous and liquid media that will not be corrosive for the Cu-alloy. Liquid filling version for adverse service conditions where pulsation or vibration exists.
 Scale ranges: -1kg/cm² ~ 0 ~ 20kg/cm²
 0 ~ 600 kg/cm²
 Scale unit: Mpa kg/cm² bar psi
 Accuracy class: 1.0/1.6/2.5
 Connection: 40(1.5"), 50(2"), 63(2.5") NPT, PT, BSP(1/8", 1/4"), M10x1, M14x1.5, 83(3"), 100(4"), 150(6") NPT, PT, BSP(3/8", 1/2"), M20x1.5

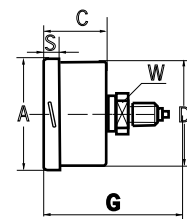


Nominal size

PART NO.	A	B	C	D	E	S	W
113.212	46	38	25	41	6.5	5	12
113.213	55	47	26	50	7.5	5	14
113.214	68	55	28	62	8.5	6	14
113.216	97	68	32	87	11	6.5	22
113.217	108	85	36	98	12	7-	22
213.217	101	90	48	99	18	18	22
213.219	158	110	48	149	20	13	22

CBM (Center Back Mount)

Models: 113.22 213.22 Center back mount
 112.24, 212.24, 112.25 Back panel
 Service intended: Suitable for gaseous and liquid media that will not be corrosive for the Cu-alloy. Liquid filling version for adverse service conditions where pulsation or vibration exists.
 Scale ranges: -1kg/cm² ~ 0 ~ 20kg/cm²
 0 ~ 600 kg/cm²
 Scale unit: Mpa kg/cm² bar psi
 Accuracy class: 1.0/1.6/2.5
 Connection: 40(1.5"), 50(2"), 63(2.5") NPT, PT, BSP(1/8", 1/4"), M10x1, M14x1.5, 83(3"), 100(4"), 150(6") NPT, PT, BSP(3/8", 1/2"), M20x1.5



Nominal size

PART NO.	A	C	D	G	S	W
113.222		25		42		12
113.223		26		52		14
113.224		28		56		14
113.226		32		62		22
113.227		36		75		22
213.227		48		84		22

LMF (Lower Mount Flange)

Model: 113.23, 213.23 Lower surface mounting flange
213.26 Lower panel mounting flange

Service intended: Suitable for gaseous and liquid media that will not be corrosive for the Cu-alloy.
Liquid filling version for adverse service conditions where pulsation or vibration exists.
3-hole panel mounting flange.for assembling on the spot.

Scale ranges: -1kg/cm² ~ 0 ~ 20kg/cm²
0 ~ 600 kg/cm²

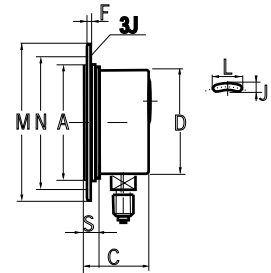
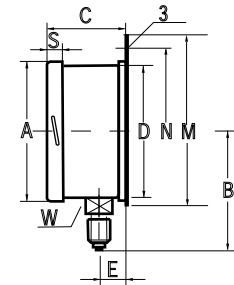
Scale unit: Mpa kg/cm² bar psi

Accuracy class: 1.0/1.6/2.5

Connection: 63(2.5") NPT, PT, BSP(1/8", 1/4"), M10x1, M14x1.5, 83(3"), 100(4"), 150(6") NPT, PT, BSP(3/8", 1/2"), M20x1.5

Nominal size

PART NO.	A	B	C	D	E	M	N	S	W
113.234	68	55	28	62	8.5	85	78	6	14
113.237	108	85	43	98	15	128	116	7	22
213.237	101	90	54	99	22	128	116	18	22
213.239	158	110	50	149	20	179	164	14	22
213.267	101	90	48	99	18	135	116	18	22



BPM (Back Panel Mount)

Models: 113.24, 213.24 Back connection, 3-hole panel mounting flange
113.25 Back connection, U-form clamp mount

Service intended: Suitable for gaseous and liquid media that will not be corrosive for the Cu-alloy.
Liquid filling version for adverse service conditions where pulsation or vibration exists.
3-hole panel mounting flange or U-clamp, for assembling on the spot.

Scale ranges: -1kg/cm² ~ 0 ~ 20kg/cm²
0 ~ 600 kg/cm²

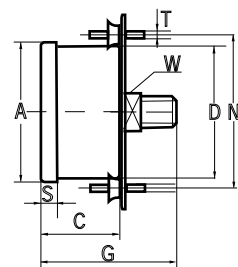
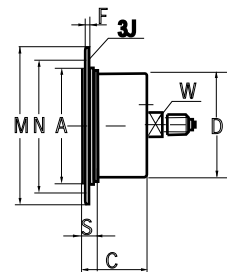
Scale unit: Mpa kg/cm² bar psi

Accuracy class: 1.0/1.6/2.5

Connection: 40(1.5"), 50(2"), 63(2.5") NPT, PT, BSP (1/8", 1/4"), M10x1, M14x1.5, 100(4") NPT, PT, BSP(3/8", 1/2"), M20x1.5

Nominal size

PART NO.	A	C	D	G	M	N	S	T	W
113.242		25		42		52.5		/	
113.243		26		52		66		/	
113.244		28		56		78		/	
113.247		36		76		116		/	
213.247		48		84		116		/	
113.252		25		42		46		M5	
113.253		26		52		56		M5	
113.254		28		56		72		M5	



Standard	-LM(Lower LMF(Lower Mount Flange))	
Model:	131.31, 231.31	Lower mount
	131.33, 231.33	Lower surface mounting flange
	231.36	Lower panel mounting flange
Service intended:	For gaseous and liquid also corrosive media, also at corrosive environment Special version Ammonia gauge, with temperature scale	
Scale ranges:	0~600 kg/cm ²	
Scale unit:	Mpa kg/cm ² bar psi	
Accuracy class:	2.5	
Connection:	40(1.5"), 50(2"), 63(2.5") NPT, PT, BSP(1/8", 1/4"), M10x1, M14x1.5, 100(4") NPT, PT, BSP(3/8", 1/2"), M20x1.5	

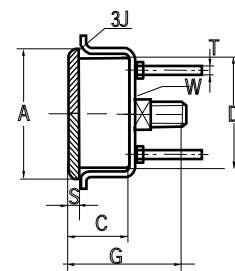
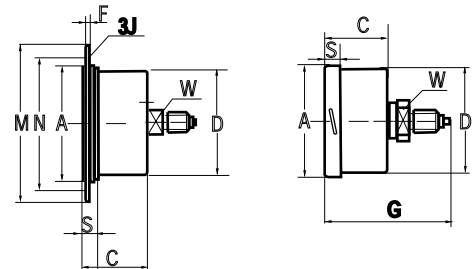
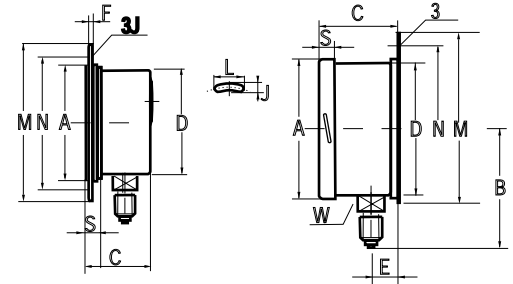
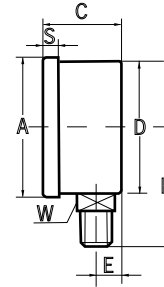
Nominal size

PART NO.	A	B	C	D	E	M	N	S	W
131.312	41	36	23	41	7.5	/	/	9	11
131.313	52	48	29	51	10	/	/	10	14
131.314	63	54	29	62	10	/	/	17	14
131.317	100	85	36	98	13.5	/	/	18	22
231.317	102	85	48	99	15	/	/	18	22
131.334	63	54	28	62	10	80	71.5	4	14
131.337	100	85	37	98	13.5	128	116	18	22
231.337	102	85	54	99	17	128	116	18	22
231.367	102	85	48	99	15	135	116	18	22

Standard	-CBM(Center Back Mount) -BPM(Back Panel Mount)	
Models:	131.32, 231.32	Center Back Mount
	131.34, 231.34	Back connection, 3-hole panel mounting flange
	131.35	Back Connection. U-form clamp mounting
Service intended:	For gaseous and liquid also corrosive media, also at corrosive environment Special version Ammonia gauge, with temperature scale	
Scale ranges:	4~600 kg/cm ²	
Scale unit:	Mpa kg/cm ² bar psi	
Accuracy class:	2.5	
Connection:	40(1.5"), 50(2"), 63(2.5") NPT, PT, BSP (1/8", 1/4"), M10x1, M14x1.5, 100(4") NPT, PT, BSP(3/8", 1"), M20x1.5	

Nominal size

PART NO.	A	C	D	G	M	N	S	W
131.322		25		41		/		11
131.323		29		48		/		14
131.324		29		53		/		14
131.327		36		66		/		22
231.327		48		78		/		22
131.342		26		45		52.5		11
131.343		28		48		53		14
131.344		30		53		73.5		14
231.347		48		78		116		22
131.352		27		42		/		11
131.353		30		48		/		14
131.354		30		50		/		14

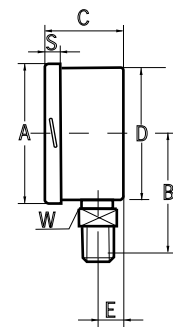


Optional Extras - LM (Lower Model)

Model:	232.31	Bottom connection, waterproof
	233.31	Bottom connection, liquid filling
Service intended:	For gaseous and liquid also corrosive media, also at corrosive environment Special version Ammonia gauge, with temperature scale Liquid filling version for adverse service conditions where pulsation or vibration exist. Special versions alarm contacts.	
Scale ranges:	4~600 kg/cm ²	
Scale unit:	Mpa kg/cm ² bar psi	
Accuracy class:	1.6 / 1.0	
Connection:	63(2.5") NPT, PT, BSP(1/8", 1/4"), M10x1, M14x1.5, 100(4"), 150(6") NPT, PT, BSP(3/8", 1/2"), M20x1.5	

Nominal size

PART NO.	A	B	C	D	E	S	W
232,314	68	55	28	62	8,5	6	14
232,317	101	90	48	99	18	18	22
232,319	158	110	48	149	20	13	22
233,314	68	55	28	62	8,5	6	14
233,317	101	90	48	99	18	18	22
233,319	158	110	48	149	20	13	22

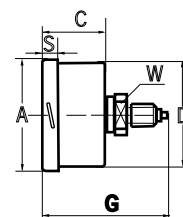


Optional Extras -CBM (Center Back Mount)

Models:	232.32	Back connection, waterproof
	233.32	Back connection, liquid filling
Service intended:	For gaseous and liquid also corrosive media, also at corrosive environment Special version Ammonia gauge, with temperature scale Liquid filling version for adverse service conditions where pulsation or vibration exist. Special versions alarm contacts.	
Scale ranges:	4~600 kg/cm ²	
Scale unit:	Mpa kg/cm ² bar psi	
Accuracy class:	1.6 / 1.0	
Connection:	63(2.5") NPT, PT, BSP (1/8", 1/4"), M10x1, M14x1.5, 100(4"), 150(6")NPT, PT, BSP(3/8", 1/2"), M20x1.5	

Nominal size

PART NO.	A	C	D	G	S	W
232,324		28		58		14
232,327		48		84		22
233,324		28		58		14
233,327		48		84		22

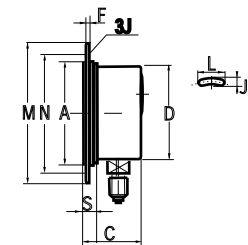
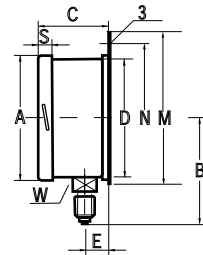


**Optional Extras - LSM (Lower Surface Mount)
LPM (Lower Panel Mount)**

Model:	232.33	Lower surface mounting flange, waterproof
	232.36	Lower panel mounting flange, waterproof
	233.33	Lower surface mounting flange, liquid filling
	233.36	Lower panel mounting flange liquid filling
Service intended:	For gaseous and liquid also corrosive media, also at corrosive environment Special version Ammonia gauge, with temperature scale Liquid filling version for adverse service conditions where pulsation or vibration exist. Special versions alarm contacts.	
Scale ranges:	4~600 kg/cm ²	
Scale unit:	Mpa kg/cm ² bar psi	
Accuracy class:	1.6 / 1.0	
Connection:	63(2.5") NPT, PT, BSP(1/8", 1/4"), M10x1, M14x1.5, 100(4") NPT, PT, BSP(3/8", 1/2"), M20x1.5	

Nominal size

PART NO.	A	B	C	D	E	M	N	S	W
232,334	68	55	28	62	8,5	85	78	6	14
232,337	101	90	54	99	22	128	116	18	22
232,367	101	90	48	99	18	135	116	18	22
233,334	68	55	28	62	8,5	85	78	6	14
233,337	101	90	54	99	22	128	116	18	22
233,367	101	90	48	99	18	135	116	18	22

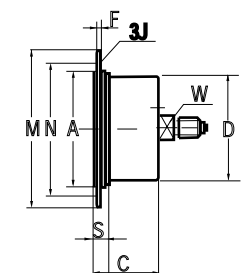
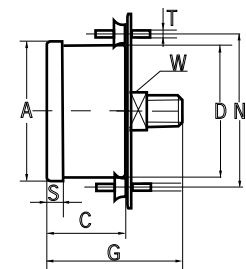


Optional Extras - BPM (Back Panel Mount)

Models:	232.34	Back panel mounting flange, waterproof
	232.35	Back connection, U-form clamp mounting, waterproof
	233.34	Back panel mounting flange liquid filling
	233.35	Back connection, U-form clamp mounting, liquid filling
Service intended:	For gaseous and liquid also corrosive media, also at corrosive environment Special version Ammonia gauge, with temperature scale Liquid filling version for adverse service conditions where pulsation or vibration exist. Special versions alarm contacts.	
Scale ranges:	4~600 kg/cm ²	
Scale unit:	Mpa kg/cm ² bar psi	
Accuracy class:	1.6 / 1.0	
Connection:	63(2.5") NPT, PT, BSP (1/8", 1/4"), M10x1, M14x1.5, 100(4"), 150(6")NPT, PT, BSP(3/8", 1/2"), M20x1.5	

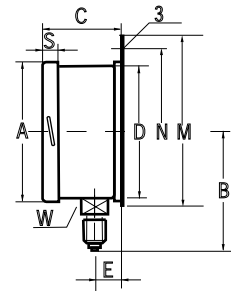
Nominal size

PART NO.	A	C	D	G	M	N	S	W	T
232,344		28		55		78		14	
232,347		48		64		116		22	
232,354		28		55		78		14	
233,344		28		55		78		14	
233,347		48		64		116		22	
233,354		28		55		78		14	



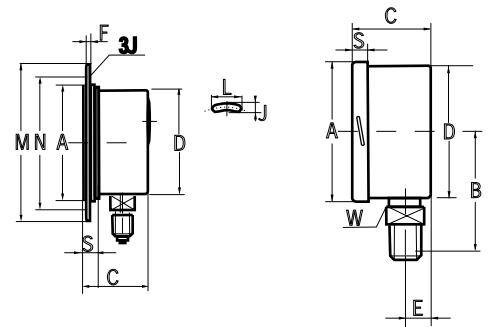
High Overpressure Safety Pattern Gauges

Model:	232.41	Bottom connection, waterproof
	233.41	Bottom connection, liquid filling
	232.43	Lower surface mounting flange, waterproof
	233.43	Lower surface mounting flange, liquid filling
	232.46	Lower panel mounting flange, waterproof
	233.46	Lower panel mounting flange, liquid filling
Service intended:	For gaseous and liquid also corrosive media, also at corrosive environment Special version Ammonia gauge, with temperature scale Liquid filling version for adverse service conditions where pulsation or vibration exist. For short-duration overpressures of up to multiples of the scale ranges.	
Scale ranges:	4~600 kg/cm ²	
Scale unit:	Mpa kg/cm ² bar psi	
Accuracy class:	1.6 / 1.0	
Connection:	63(2.5") NPT, PT, BSP(1/4"), M10x1, M14x1.5, 100(4") NPT, PT, BSP(3/8", 1/2"), M20x1.5	



Nominal size

PART NO.	A	B	C	D	E	M	N	S	W
232,414	68	55	28	62	8,5	/	/	6	14
232,417	101	90	48	99	18	/	/	18	22
232,434	68	55	28	62	8,5	85	78	6	14
232,437	101	90	54	99	22	128	116	18	22
232,467	101	90	48	99	18	135	116	18	22
233,414	68	55	28	62	8,5	/	/	6	14
233,417	101	90	48	99	18	/	/	18	22
233,434	68	55	28	62	8,5	85	78	6	14
233,437	101	90	54	99	22	128	116	18	22
233,467	101	90	48	99	18	135	116	18	22



Mechanical Accessories

Syphons

Service intended:	For protection against excessive pulsation and heat.	
PART NO.	910.1	Copper
	930.2	Stainless steel



Adaptors/Sealing washers

Service Intended:	For mounting pressure gauges/sealing the connection.	
PART NO.:	910.3	Adaptors
	900.4	Sealing washers

